



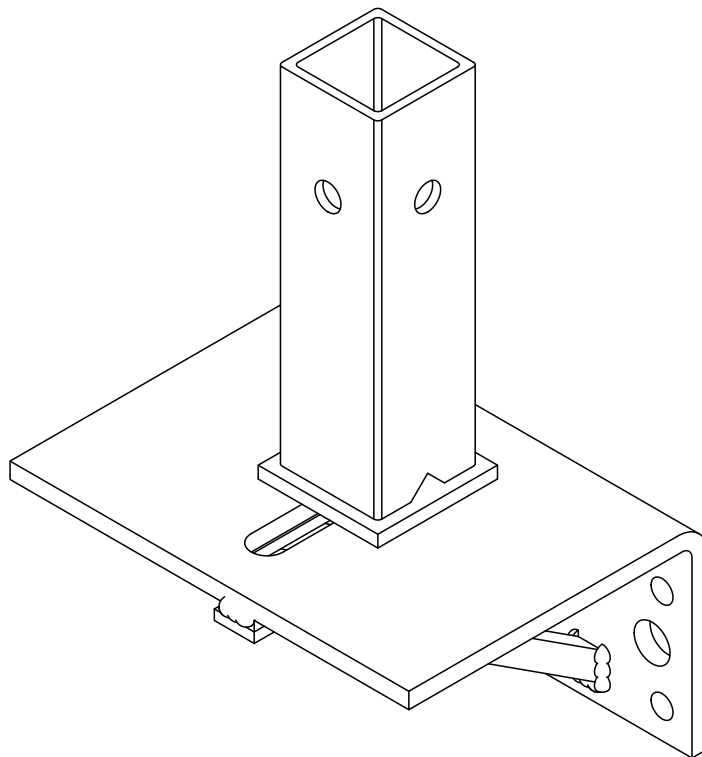
TOTAL EDGE PROTECTION WITH EASE

PRODUCT INSTALLATION GUIDE

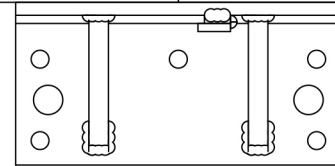
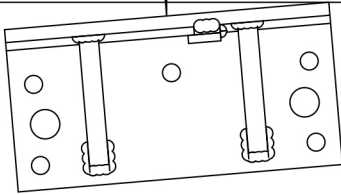


UNIVERSAL FACE MOUNT BRACKET

WEIGHT - 2.0KG / 4.4LBS



EU043 / NA043



Maximum Component Spacing

Face Mount
Bracket

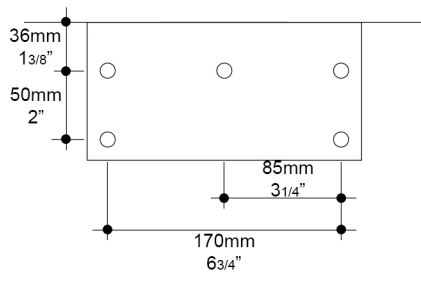
Slab Edge Face

Half Panels:
1200mm Max.
3' 11"

Full Panels:
2700mm Max.
8' 10⁵/₁₆"

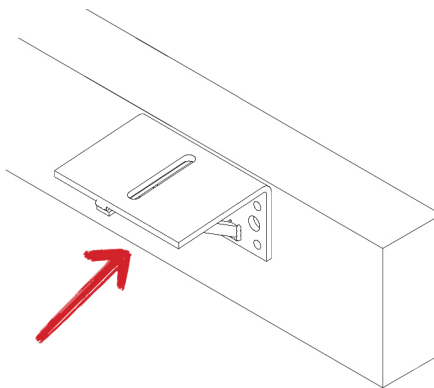
IMPORTANT: DISASSEMBLY PROCESS MUST FOLLOW THE INSTRUCTIONS IN REVERSE ORDER. IMPROPER INSTALLATION OR REMOVAL COULD RESULT IN SERIOUS INJURY OR DEATH.

1



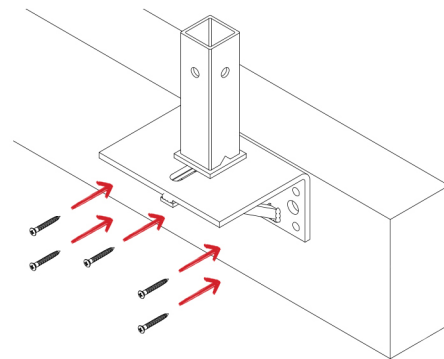
1. Mark out the holes on the slab edge face using the guidance dimensions above.

2



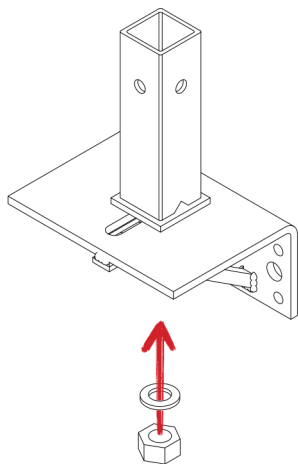
1. Align the Facemount Bracket with the edge of the slab ensuring it sits flush with the top of the surface.

3



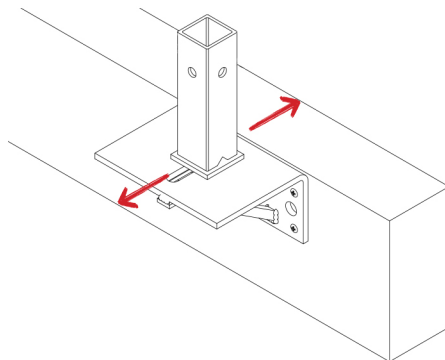
2. Fix the bracket in place using 5No. 8mm X 100mm (5/8" X 4" UNC) Heco Topix screws.

4



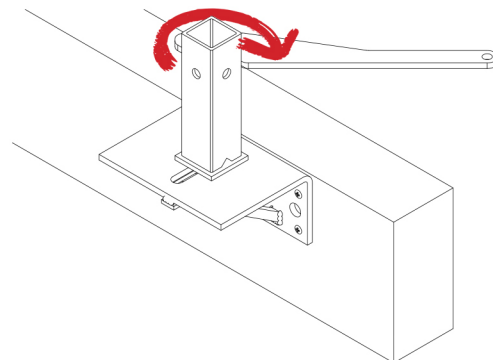
4. Fix the socket base onto the bracket using an M16 (5/8" UNC) washer and nut.

5



5. Adjust the socket base into the correct position using the slot on the bracket.

6



6. Tighten concrete socket base with socket base wrench.