



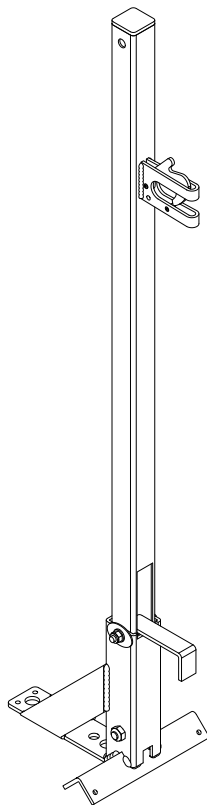
TOTAL EDGE PROTECTION WITH EASE

## PRODUCT INSTALLATION GUIDE



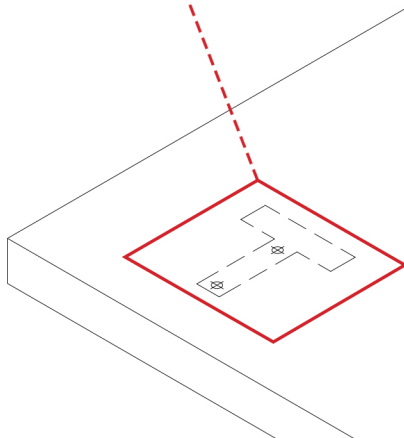
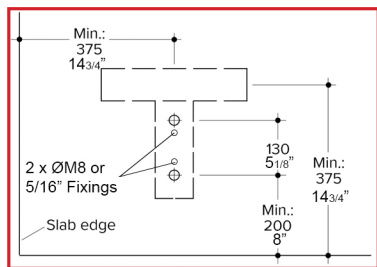
# DUAL PURPOSE STAND

WEIGHT - 6.0KG / 3.2LBS



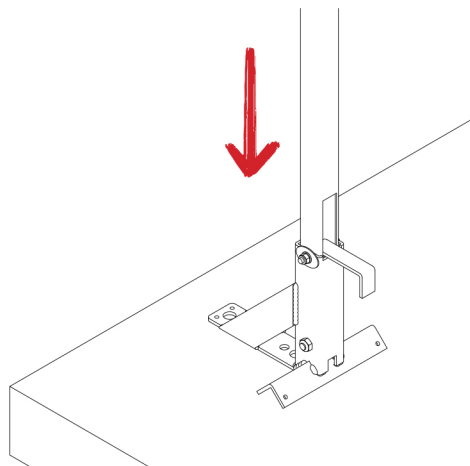
**EU007 / NA007**

**IMPORTANT:** DISASSEMBLY PROCESS MUST FOLLOW THE INSTRUCTIONS IN REVERSE ORDER. IMPROPER INSTALLATION OR REMOVAL COULD RESULT IN SERIOUS INJURY OR DEATH.



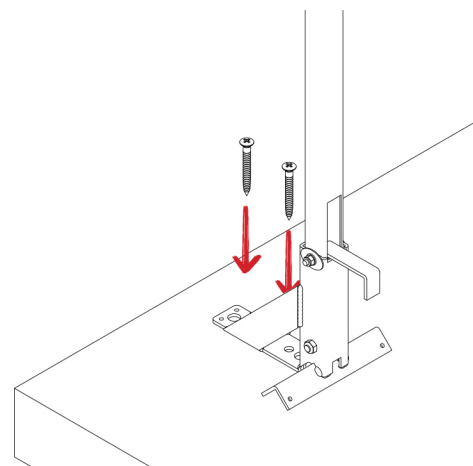
Minimum distances from edge of slab.

1



1. Place the stand in position using the distance on the left image.

2



2. Screw in place using 2No. M8 x 60mm ( 5/16" x 2 3/8") Heco Topix fixings.