



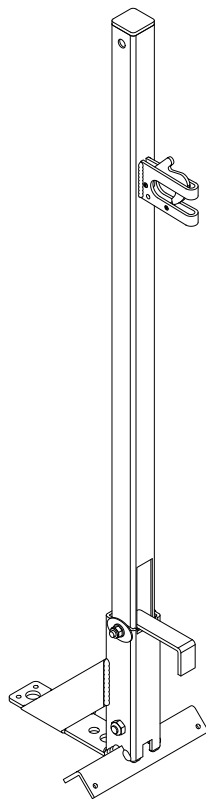
TOTAL EDGE PROTECTION WITH EASE

PRODUCT INSTALLATION GUIDE



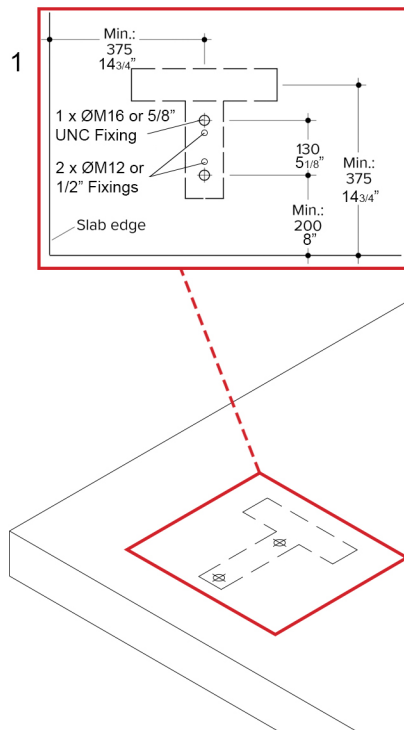
DUAL PURPOSE STAND

WEIGHT - 6.0KG / 13.3LBS



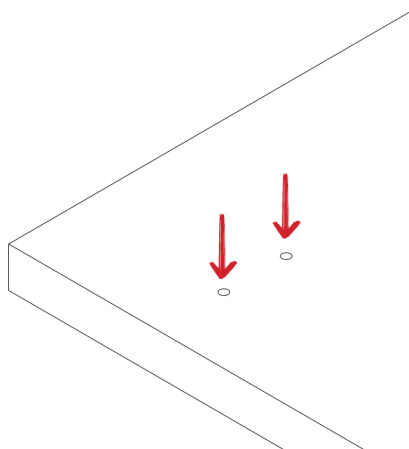
EU007 / NA007

IMPORTANT: DISASSEMBLY PROCESS MUST FOLLOW THE INSTRUCTIONS IN REVERSE ORDER. IMPROPER INSTALLATION OR REMOVAL COULD RESULT IN SERIOUS INJURY OR DEATH.



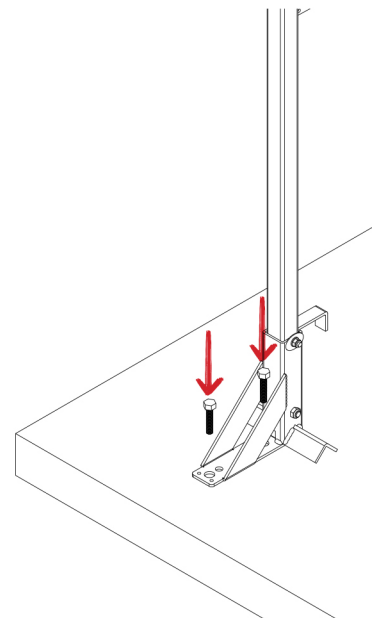
1. Mark position for holes
using guidance box above.

2



2. Drill required size and amount of
holes 115mm/ 4^{1/2}" deep to accept
a 100mm/ 4" bolt (thunderbolt or
equivalent).

3



3. Position the Dual Purpose Stand
and screw bolt(s) (thunderbolt or
equivalent) into hole(s).