



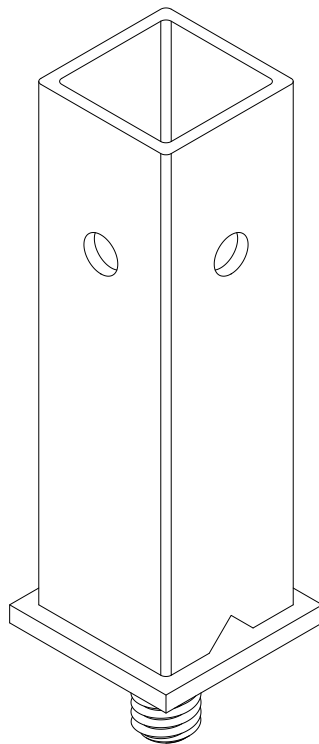
TOTAL EDGE PROTECTION WITH EASE

PRODUCT INSTALLATION GUIDE



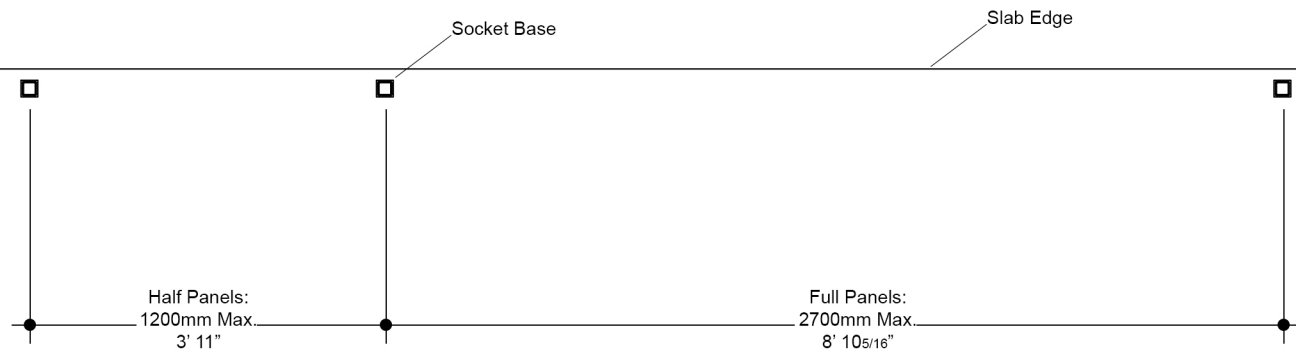
CONCRETE SOCKET BASE

WEIGHT - 1.5KG / 3.3LBS



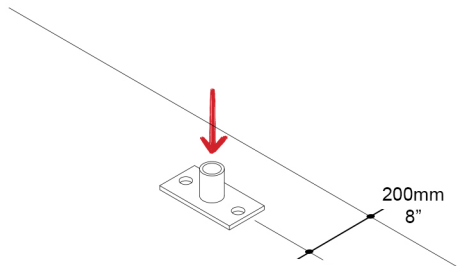
EU010 / NA010

Maximum Component Spacing

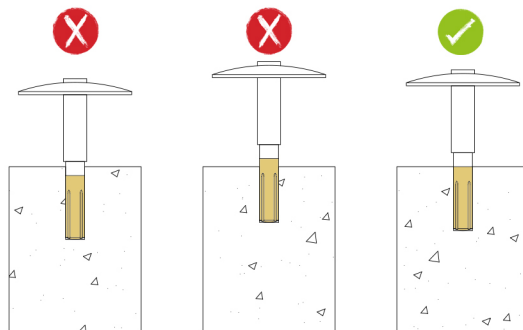


IMPORTANT: DISASSEMBLY PROCESS MUST FOLLOW THE INSTRUCTIONS IN REVERSE ORDER. IMPROPER INSTALLATION OR REMOVAL COULD RESULT IN SERIOUS INJURY OR DEATH.

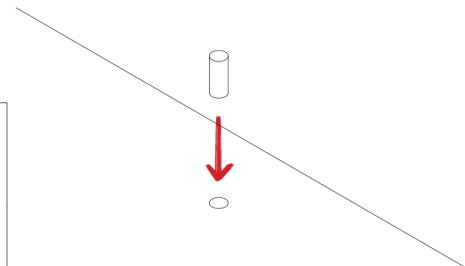
1



2



3

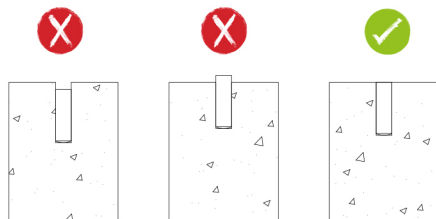


1. Using the drill alignment tool, drill a hole to accept an $\text{ØM16mm} \times 50\text{mm}$ / $\text{Ø5/8"} \times 2"$ wedge anchor, to manufacturer's specification.

2. Check hole is the correct depth.

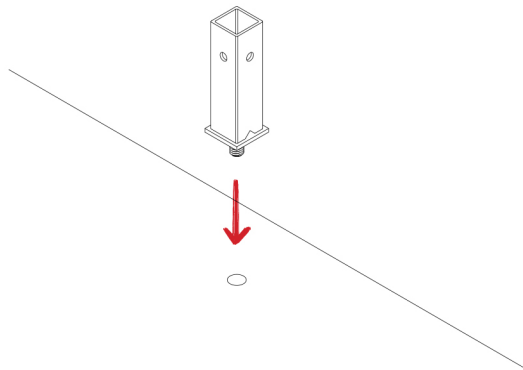
3. Fit wedge anchor into hole using manufacture approved equipment as specified.

4



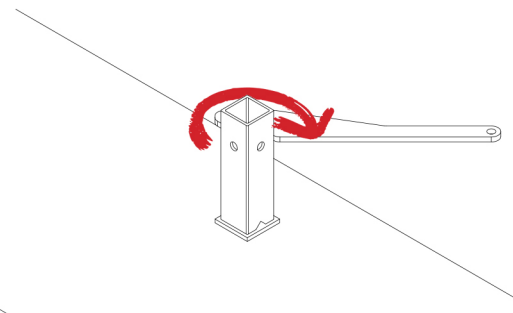
4. Check anchor bolt fits correctly into the drilled hole.

5



5. Screw socket base into wedge anchor.

6



6. Ensure socket base is tight by using the Socket Base Wrench.